



Stop Fighting with Excel Start Finishing Faster

simple solutions to the most common
office problems



"I'm going home
on time today."



150
Solutions



3 - Weeks
Transformation



Sunday
Co-Working
Session

150 Problems Solved

Bootcamp Begins On: June 1st, 2026

Boffin Institute of Data Science

Yoshika - 074 033 4232 | info@boffin.lk

Everyday Fixes

Focusing on the things that slow you down in your work



Cleaning Data

Fix messy names, dates, and lists without retyping everything

Professional Printing

Make sure your reports look neat and fit perfectly on one page



Speedy Shortcuts

Simple ways to move around your files without using the mouse

Protecting Your Work

Lock your formulas so they don't get accidentally changed or deleted



Before

Employee	Join Date	Current Salary
johN smITH	2023.10. 15	250000
mary janes	'45212	35,000
PETER_ BROWN	"Oct 20 2022"	#####



After

Employee	Join Date	Current Salary
John Smith	15-Oct-23	55,000
Mary Janes	12-Nov-23	35,000
Peter Brown	20-Oct-22	42,500

Connecting Your Data Universe

Mastering Multi-Sheet Mastery & Intelligent Matching.

Scattered data and rigid lookups cause exhausting re-work. Fragile 'IF' statements for complex matching increase risk and management difficulty.



- **Kill the Nested IFs:** Calculate Tax and Commissions with 1-line formulas.
- **Search Anywhere:** Look left, right, or across 12 different tabs.
- **Dynamic Hubs:** Build a single dashboard that "talks" to every sheet in your file.

Complex Decisions & Optimization

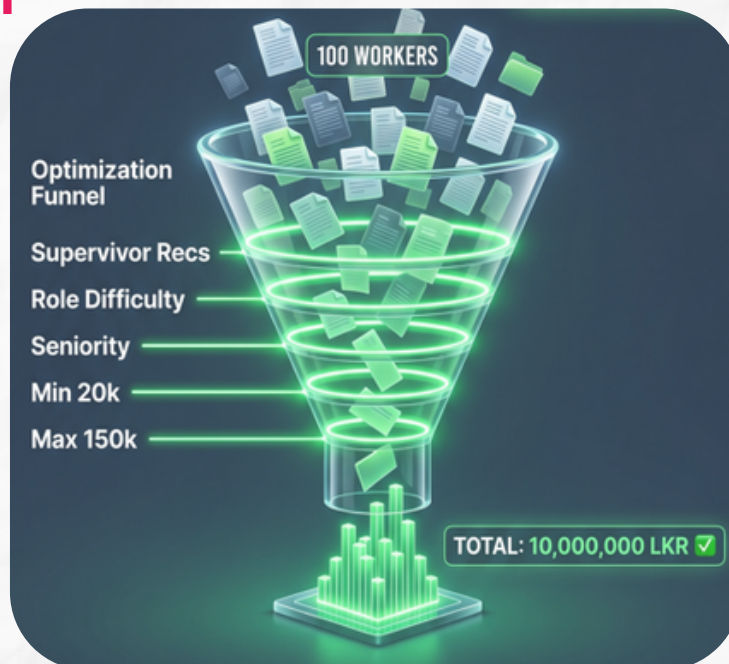
From manual guesswork to mathematical certainty

The Director Board has allocated 10 Million for salary increments across 100 workers. You must follow 5 strict rules. Manually, this is a never-ending loop of trial and error. One last-minute change forces you to restart from scratch.

The Manual Loop



Result: **"Good Enough"**
Effort: 6+ Hours



The Smart Workflow



Result: **Absolute Optimum**
Effort: 10 Minutes

When the Board asks: '**What if we ignore seniority?**', the traditional process requires a total manual recalculation. A **logic-based workflow** handles that same shift in seconds, delivering the new result before the meeting ends.

**Forget the heavy math. Use Logic
Let Excel solve the puzzle**

The Intelligence Engine

Moving from static sheets to self-managing reports.



Automatic Summaries:

Data moves itself into your reports based on your rules.

Global Updates:

Change one cell to update thousands of rows instantly.

Deep Trace:

Follow complex approval paths to the final answer in one step.

- Reports are static and high-maintenance manual filtering, copy-pasting, and constant formula fixes slow everything down.
- Flow-based formulas like FILTER and MAP/BYROW turn one formula into a live, auto-updating report across all data.
- SCAN and REDUCE add memory, handling sequences and dependencies to deliver final results in a single step.

**Don't just store data.
Build a system that answers your questions**

Creating a Smart Workflow

Stop repeating yourself. Build it once, refresh it forever



Self-Updating Systems:

Connect your data once and your entire workflow stays updated no more manual re-entry

Intelligent Data Links

Smarter ways to find and connect information across different sheets instantly



Modern Logic

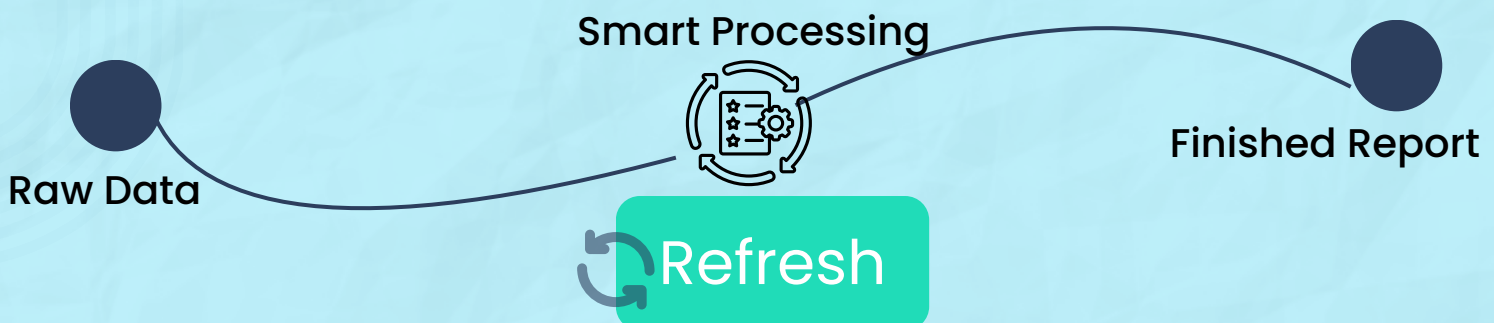
Write formulas that are easy to read and don't break when you add new rows of data

Dynamic Snapshots:

Summary reports and charts that change automatically as your data changes



Smart Workflow



Build a workflow that handles the details, so you can focus on the decisions.

Sunday Co-Working Session

Don't just learn Excel bring your actual office problems to us



SUNDAY INTENSIVE



FILE & LOGIC FIXES



5-HOUR DURATION



10:00 AM - 3:00 PM

Secure, Focused, Personalized Support



Bring Your Own Files (Confidentially):

In Session 1, we teach you to convert your files into safe 'Dummy Sheets' protects your sensitive data while keeping the logical structure intact. You bring that safe file for session.

Extended Q&A

A relaxed, supportive environment where every question gets a clear answer. No one gets left behind



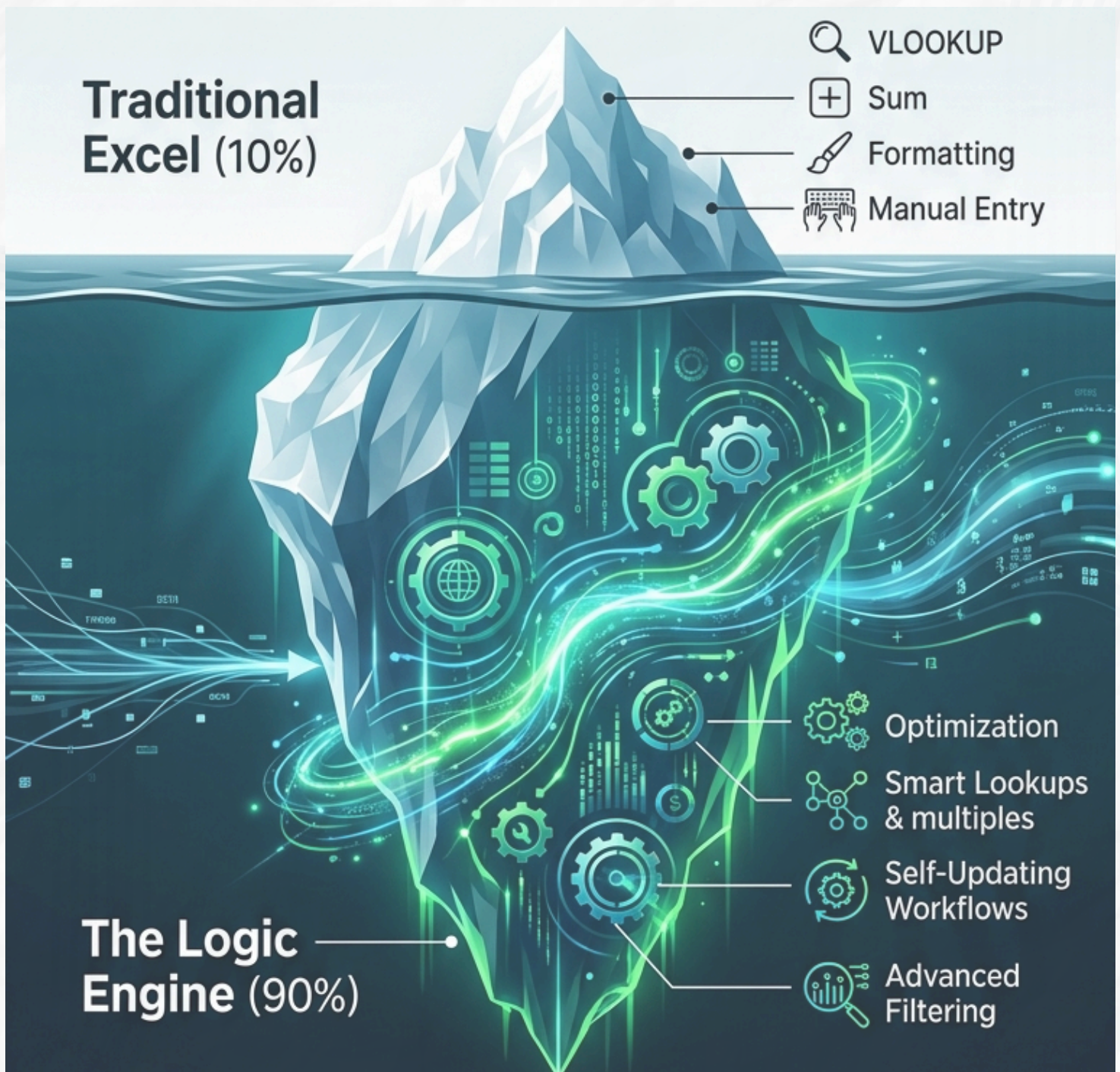
Real-World Fixes

We solve the actual problems you face in your daily job using your safe dummy datasets.

**Your work, solved. Your questions, answered
(Safe & Confidential)**

Breaking the Traditional Trap

Are you using Excel's power, or just its grid?



90% of Excel's true capabilities remain underutilized in today's office environment. We help you to master the hidden features, enabling your work to become more efficient and self-sustaining.

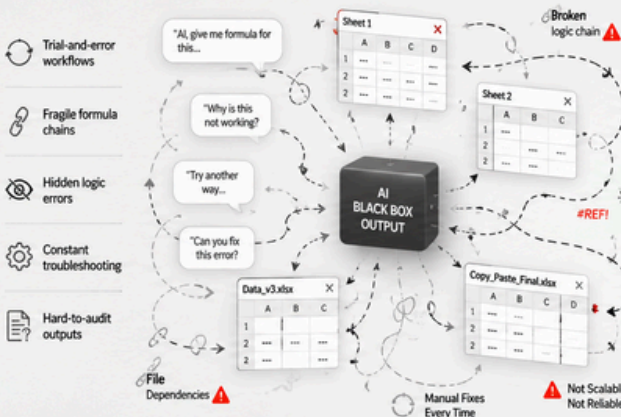
Your Advantage in the AI Era

AI Accelerates Work – Structure Creates Advantage

In 2026, the question is no longer: ‘Why learn Excel when everyone has AI?’ The real question is: **How do I remain valuable when everyone has access to the same AI?**

Unstructured Execution

Reactive. Fragmented. Overloaded.



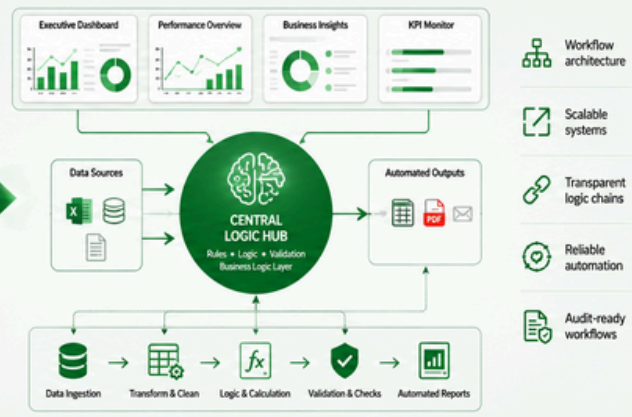
Chaos → Structure

Logic • Verification • Scalability

AI becomes exponentially more powerful when combined with structure.

Structured Advantage

Scalable. Intelligent. Purposeful.



Why Expertise Matters More in the AI Era

AI can generate outputs. Professionals verify systems

Confident AI answers do not guarantee correct logic.

The advantage is no longer who uses AI. It is who can structure and audit AI outputs.

The Prompting Loop

Treating AI as a “Magic Wand”

Copy-pasting logic that is hard to explain

Fragile workflows that break after small changes

Constant troubleshooting and rework

The Structural Architect

Treating AI as a High-Precision Engine

Building transparent, auditable systems

Resilient structures that evolve with the business

Build once, refresh forever

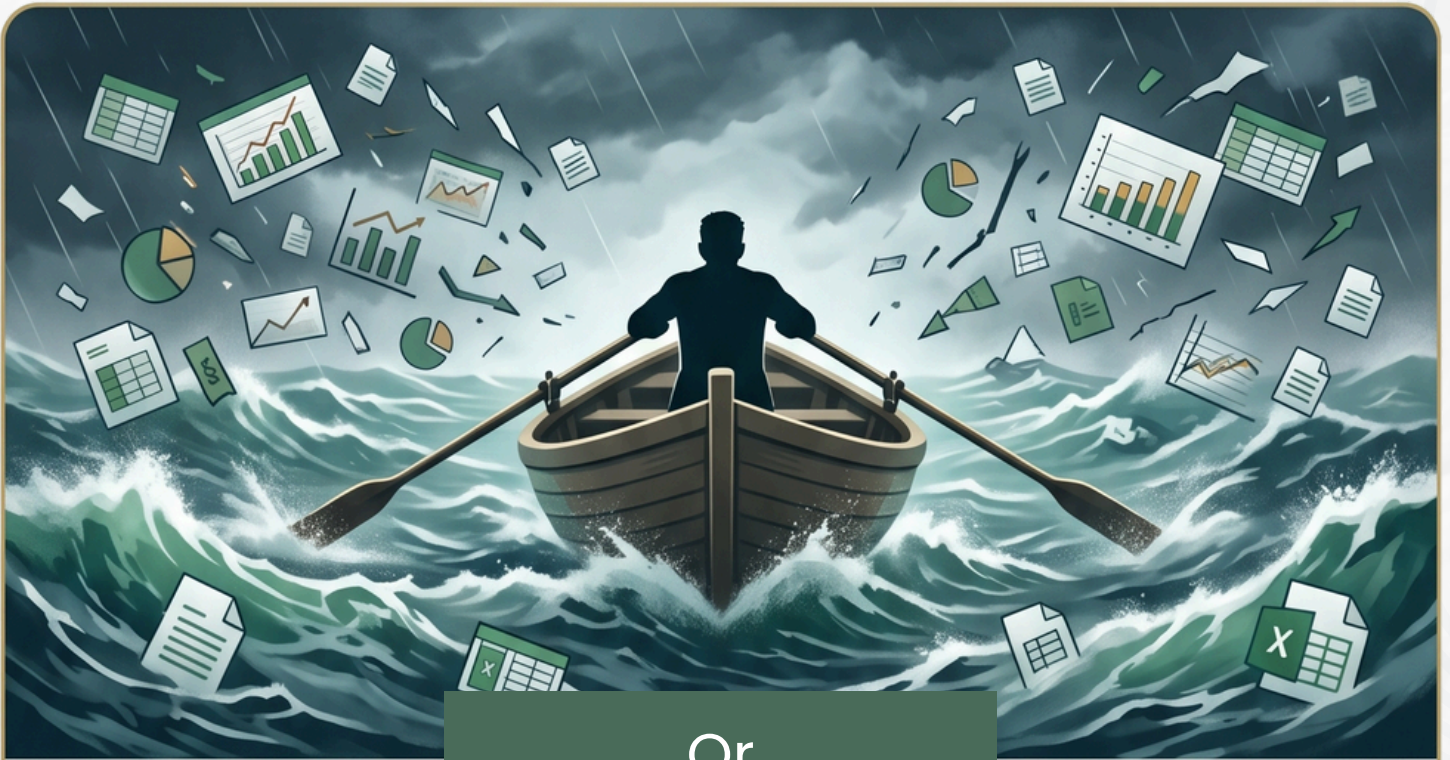
The future belongs to the Architects, not just the users.

4.3 Hours

is the amount of time you lose every week to manual data tasks. Over a year, you are losing **26** working days to inefficient Excel habits

A Moment of Reflection

Are you so busy with rowing the boat and you neglect to activate the motor?



Or



Your Ideal Space

You should not be confined to repetitive manual tasks. Reclaim your time and take back your 5:00 PM.